

LEGEND

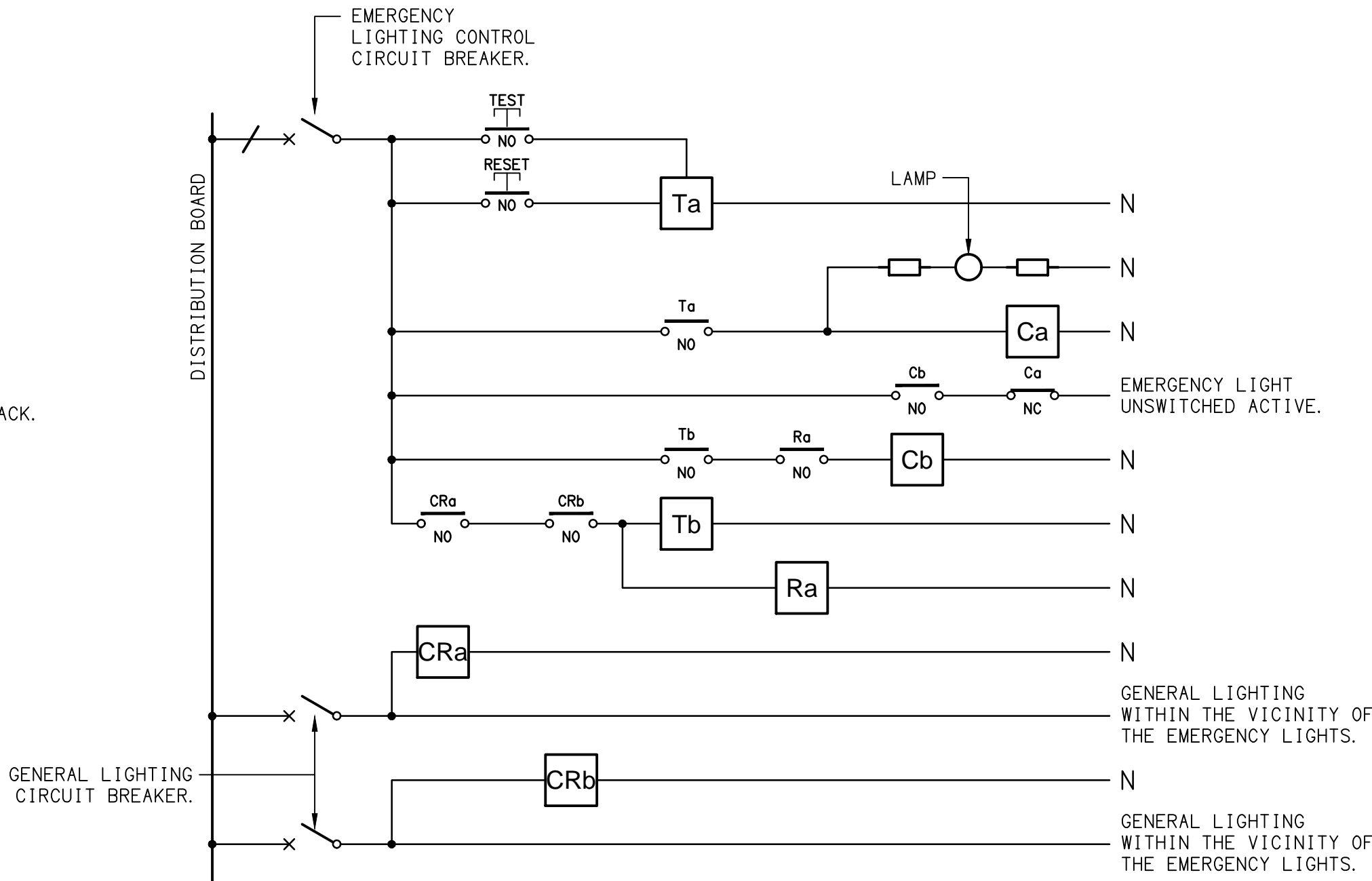
	ELECTRICAL SERVICES SWITCHBOARD.
	SWITCHBOARD / CONTROL PANEL NOT PROVIDED AS PART OF THE ELECTRICAL SUBCONTRACT.
	SINGLE POWER OUTLET.
	DOUBLE POWER OUTLET.
	GAMING / TAB OUTLET BY GAMING ELECTRICIAN.
	EXISTING POWER OUTLET TO REMAIN AS NOTED.
	SIGNAGE CONNECTION.
	SINGLE PHASE ISOLATOR.
	THREE PHASE ISOLATOR.
	GAMING JUNCTION BOX.
	CONDUIT ROUTE.
	FAN CONTROL, TYPE x
	LIGHTING CONTROL SWITCHPANEL, TYPE x.
	ONE-WAY LIGHT SWITCH.
	TWO-WAY LIGHT SWITCH.
	CIRCUIT LINE.
	SWITCH LINE.
	POWER CIRCUIT DESIGNATION. DENOTES DB AND CIRCUIT.
	LIGHTING CONTROL CHANNEL REFERENCE.
	ELECTRICAL EQUIPMENT AS NOTED.
	REFER TO DETAIL NOTED FOR THE AREA SHOWN HATCHED. ADDITIONAL OUTLETS & FITTINGS MAY BE SHOWN ON DETAIL.
	FIRE INDICATOR PANEL.
	SMOKE DETECTOR.
	RECESSED FIRE ALARM SPEAKER.
	FIRE ALARM DOOR SYSTEM INTERFACE.
	FE: CEILING FAN
	HR01: WALL MOUNTED HEATER.
	HRE: EXISTING HEATER TO BE RETAINED.
	Lx: LED JOINERY / CEILING STRIP LIGHT, TYPE AS NOTED.
	E1: GENERAL RECESSED LED EMERGENCY LIGHT, WHITE.
	E2: GENERAL RECESSED LED EMERGENCY LIGHT, BLACK.
	EX: EMERGENCY LED EXIT LIGHT, WHITE UNLESS NOTED AS BLACK.
	PD01: DECORATIVE SUSPENDED PENDANT LIGHT.
	PD02: NOT USED.
	PD03: DECORATIVE SUSPENDED PENDANT LIGHT.
	PD04: DECORATIVE SUSPENDED PENDANT LIGHT.
	PD05: DECORATIVE SUSPENDED PENDANT LIGHT.
	PD06: DECORATIVE SUSPENDED PENDANT LIGHT.
	WL01: WALL LIGHT.
	WL02: WALL LIGHT.
	WL03: WALL LIGHT.
	WL04: WALL LIGHT.
	WL05: WALL LIGHT.

LEGEND

	SL01: SURFACE MOUNTED DOWNLIGHT.
	SL02: NOT USED.
	SL03: NOT USED.
	SL04: SURFACE MOUNTED LIGHT.
	SL05: SURFACE MOUNTED LIGHT.
	RD01: RECESSED DOWNLIGHT.
	RD02: RECESSED ADJUSTABLE DOWNLIGHT.
	RD03: RECESSED ADJUSTABLE DOWNLIGHT.
	RD04: RECESSED ADJUSTABLE DOWNLIGHT.
	RD05: RECESSED DOWNLIGHT.
	RD06: RECESSED DOWNLIGHT.
	TLE: EXISTING LINEAR TRACK AND FITTINGS RETAINED.
	FS01: FESTOON DECORATIVE LIGHTING.
	FDE: LIGHT FITTING TYPE TO BE CONFIRMED.
	UL01: GARDEN SPIKE LIGHT.
	HL01: SUSPENDED PENDANT HEAT LAMP.
	HL02: 900 LONG LINEAR SHELF HEAT LAMP.

EQUIPMENT:

TEST – TEST PUSH BUTTON MOUNTED ON THE DISTRIBUTION BOARD ESCUTCHEON.
RESET – RESET PUSH BUTTON MOUNTED ON THE DISTRIBUTION BOARD ESCUTCHEON.
LAMP – AMBER TEST INDICATING LAMP MOUNTED ON THE DISTRIBUTION BOARD ESCUTCHEON.
Ta – ADJUSTABLE 0–3 HOUR TIMED RELAY.
Tb – 15 MINUTE RUN-ON TIMER TO OPERATE UPON THE RETURN OF MAINS POWER.
Cx – CONTACTOR x.
CRx – CONTROL RELAY x.
Rx – RELAY x.



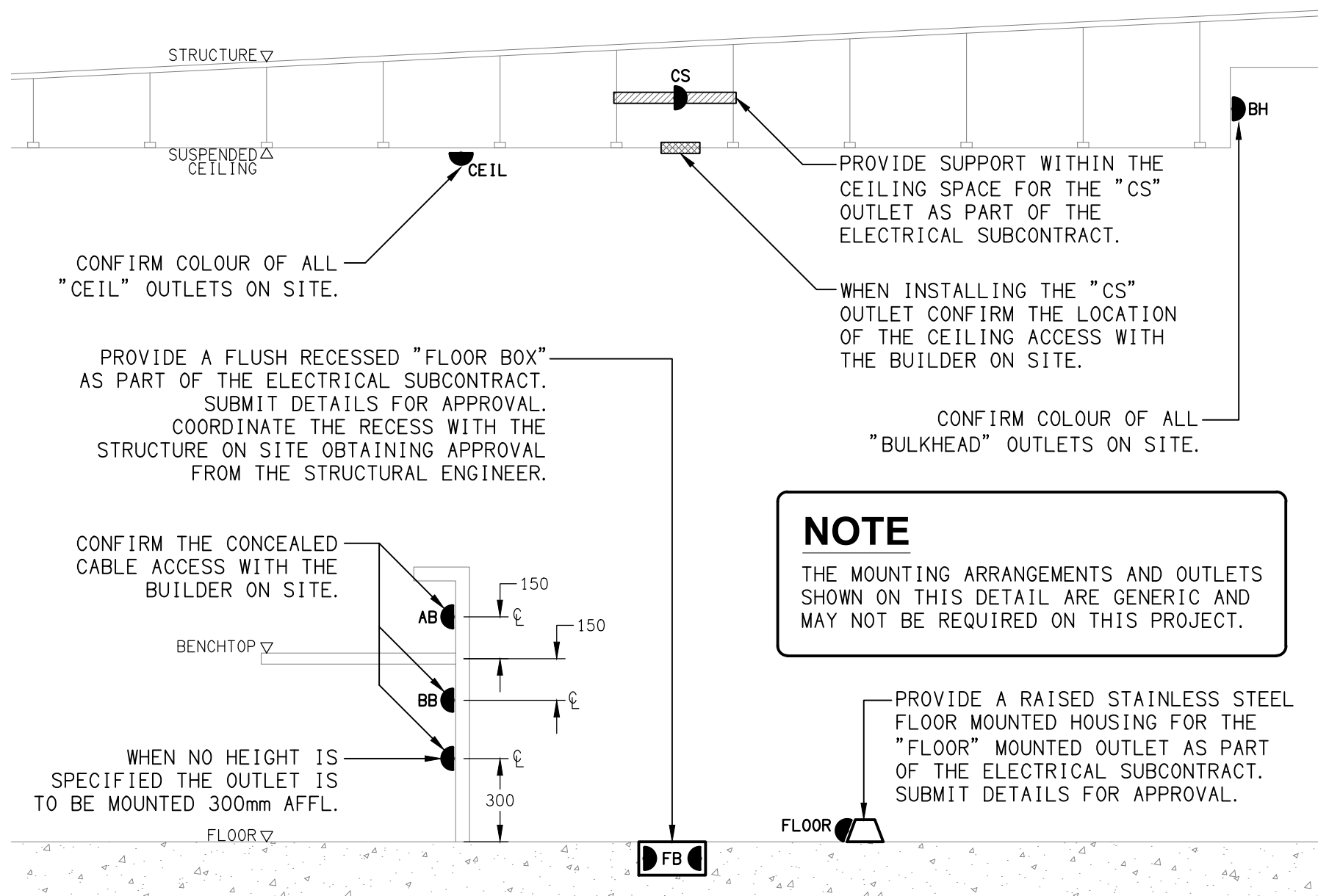
SCHEMATIC

EMERGENCY LIGHTING
NOT TO SCALE

NOTES

- THE EMERGENCY LIGHT UNSWITCHED ACTIVE / GENERAL LIGHTING SWITCHED ACTIVE CIRCUIT ARRANGEMENT AND CONTROL IS TYPICAL FOR ALL CIRCUITS SUPPLYING EMERGENCY LIGHTS.
- PROVIDE ADDITIONAL CONTROL RELAYS (CRx) CONFIGURED AS PER CRa AND CRb FOR ALL ADDITIONAL LIGHTING CIRCUITS THAT SUPPLY LIGHTS IN THE VICINITY OF THE EMERGENCY LIGHTS.

DETAIL NO LONGER REQUIRED



DETAIL

TYPICAL OUTLET MOUNTINGS
NOT TO SCALE

THE COPYRIGHT OF THIS DRAWING REMAINS THE PROPERTY OF THE ELECTRICAL DESIGN GROUP.

USE FIGURED DIMENSIONS IN PREFERENCE TO SCALE.

ALL DIMENSIONS TO BE VERIFIED ONSITE.

B	CONSTRUCTION	06/08/2025
REV:	DESCRIPTION:	DATE:

ELECTRICAL DESIGN GROUP
ELECTRICAL BUILDING SERVICES CONSULTANTS

BRISBANE: P.O. Box 15 Sherwood Qld 4075
Phone: (07) 3278 4375
Email: brisbane@edg.net.au
Web: www.edg.net.au

ELECTRICAL DESIGN GROUP BRISBANE PTY LTD
ACN 092 710 793

TRADING AS:
ELECTRICAL DESIGN GROUP

PROJECT:

ROYAL HOTEL, BEENLEIGH

SITE ADDRESS:

**85 GEORGE STREET, BEENLEIGH
QUEENSLAND**

SCALE: SHEET SIZE:

NOT TO SCALE AT **A1**

DRAWING TITLE:

**ELECTRICAL SERVICES
LEGEND & DETAILS**

PROJECT NO: DRAWING NO: REVISION:

C3556a E01 B